

Broadcast prologue from editor's lettering bench



Artificial intelligence in a technological Era



Subodh Kesharwani
Editor-In-Chief

The machines have been in use as yet and not in smallest quantities. They are making their line of attack into our day after day lives, influencing how we remain living, and endeavor to make sense about ourselves. From voice-controlled personal assistants like Siri and Alexa, to more elementary and profound technologies, for example, social algorithms, suggestive searches, self-governing and self-driving vehicles flaunting huge prognostic capacities, there are sensibly a great deal of models and uses of artificial intelligence (AI) in today's humanity.

Computer science describes AI research as operations of "smart operators" or any apparatus that recognizes its surroundings and acts in a way that generates the best possible and proficient route for accomplishing its objectives. An increasingly convoluted definition portrays AI as "a system's competence to relevantly understand outer information, to learn from such information, and to make use of those lessons to accomplish explicit objectives and assignments through flexible variation.

In 1956, AI was established as an academic discipline and since then it has gathered a lot of optimism, trailed by disenchantment and the loss of financing (also referred to as "AI Winter"). In software engineering, artificial intelligence, now and for a second time called machine intelligence, is know-how of machines, in contrast to the normal intelligence shown by people. Offhandedly, the appearance "artificial intelligence" is more often than not used to depict machines (or computers) that emulate intellectual or cognitive such as "learning" and "critical thinking". The issues (or objectives) of AI research that have been long established comprise of thinking, information delineation, arranging, learning, regular language handling, sensitivity and the capacity to budge and maneuver projects. Deep interests in the field are propelling the best in class in machine intelligence and affectability, empowering computers that comprehend their environment, commune in natural language, solve complex inquiries and link up with their milieu.

At a fundamental stage, artificial intelligence is about blueprint credentials, for instance discovering that a fastidious pattern of lines is an image of a pooch, or a stealthy. Artificial intelligence can recognize designs in information, words, expressions, and pictures. It can at present choose propensities for the human client from the information it gathers.

On the off chance that your cell phone has sprung up when you ignite your vehicle and join to Bluetooth with a message about what time it will take you to get to a spot you go regularly, and what the condition the traffic is in, this is design acknowledgment in real life. It has gathered information to prescribe that you are more likely than not setting off to that fussy spot as of now (between work and home is a typical one).

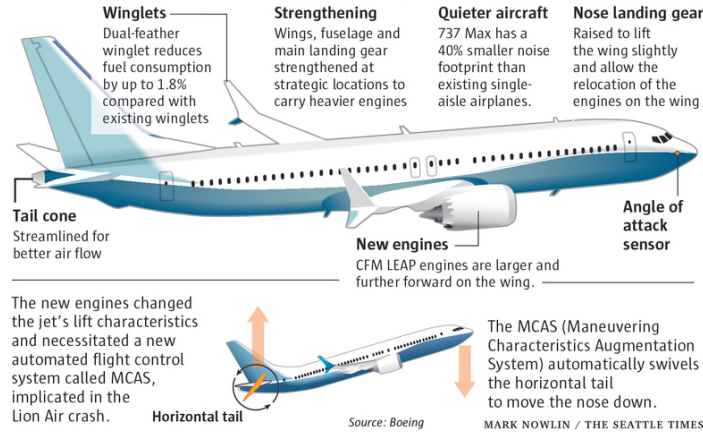
Artificial intelligence builds up its pattern acknowledgment abilities through machine language — redundancy over instance. The proposal that it will take you 10 minutes to get to a specific location at 6 am in the break of day is because it has noticed that over the period of time that is the place you are going at 6 am.

Having the option to accumulate a theory is one of the significant creating abilities for AI. The vehicle model is reasonably basic since it needn't bother with a great deal of information for investigation; in any case, this is something that is further being urbanized owing to the fact that processing power like GPUs has turned out to be a lot less expensive and increasingly open to normal individuals.

On the contrary, authentic intelligence which originates from the human end occasionally called General intelligence is one of the field's long term objectives. It was established along the lines that natural human knowledge can be explicitly directed, so that a machine can be designed to mirror it. Subsequently cause to stupefy "what started things out chicken or egg". It also raises truth-seeking perspective about the view of the brain and the ethics of making artificial beings blessed with human-like insight. There are a few models in which artificial knowledge is furnished with human insight and make a hyper intelligence model which suits the general public in totality.

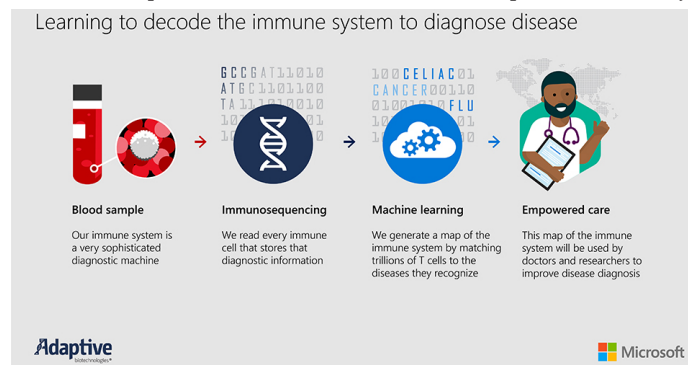
One of the initial employments of AI innovation was AI autopilots in business carriers that was propelled in 1914 (notwithstanding the restriction of autopilot). According to The New York Times, a normal trip of a Boeing plane includes just seven minutes of human-guided flight, which is regularly saved uniquely for departure and landing.

What is new on Boeing's 737 MAX



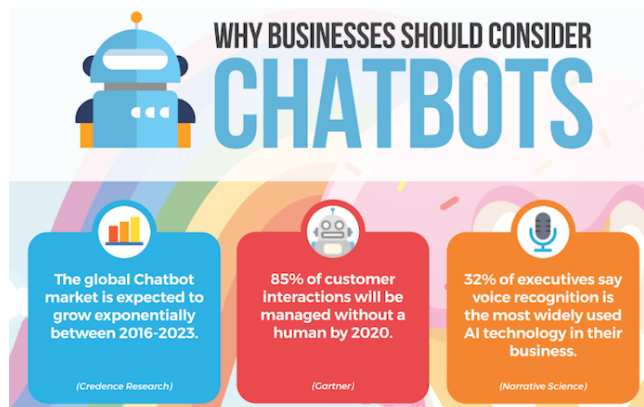
Source: Boeing

At Microsoft, specialists in artificial reasoning are burdening the explosion of advanced information and computational power with modern calculations to encourage common and normal connections among individuals and machines that protract the human ability to detect, find and understand. The exploration mixes computers, materials and frameworks with the capacity to *raison d'être*, cooperative and execute with humanlike expertise and mastery.



A lot of change is happening in basic biological science and medical research. We have these amazing advances in genomics, immunomics and new kinds of imaging. Then there is this increasing ability to get data from wearables and social determinants in real-time. So, 20 years from now we will be able to integrate the data and provide highly personalized, targeted diagnostics and therapeutics. People's access to that will be made much easier through digital means. Essentially, it will enable 24/7 access to the care you need and precise targeting of the care that you want

Chatbots use AI to comprehend client issues quicker and give progressively productive answers



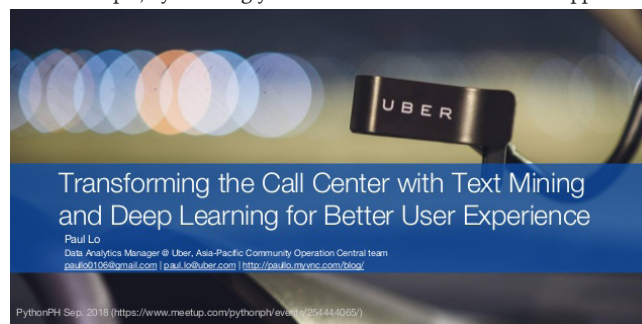
Source: chatboat



Concierge applications, for example, Mezi for movement are a genuine model. This application uses AI and NLP to make sense of the inclinations of clients and offer suggestions for movement, design or blessing thoughts they may like.

The graphic features the Eclipse Concierge logo on the left, which includes a stylized head with a radio antenna and the text 'DEVOXX UNITED STATES'. To the right, it says 'Eclipse Concierge' and 'Concierge is an OSGi framework optimized for embedded devices and the Internet of Things'. There are two QR codes: one with a 'Project Homepage' label and a link to 'http://eclipse.org/concierge', and another with a 'Clone it from here' label and a link to 'https://github.com/eclipse/concierge'. A quote states: 'It's simplicity and usability can help you with developing complex IoT applications with ease.' At the bottom, there are social media handles: '#DevoxxUS #eclipseIoT @rellermeyer'.

DeepText, a book understanding motor that, the organization claims “can comprehend with close human exactness the printed substance of a few thousand posts for every second, traversing in excess of 20 dialects.” DeepText is utilized in Facebook Messenger to identify goal—for example, by enabling you to hail a Uber from inside the application when you message



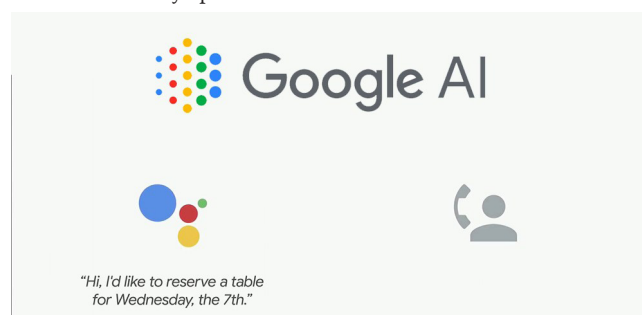
Echo, better known by its wake word, ‘Alexa,’ can be questioned about the climate conditions, tributary news and music on interest and fills in as an automated aide that reacts to voice directions to sort out home lighting and substantially more. ... Alexa is apparently pervasively. ‘She’ is the man-made brainpower (AI) that lives with us.

Deloitte Global predicts that by end-2016 more than 80 of the world’s 100 biggest venture programming organizations by incomes will have coordinated intellectual innovations into their items, a 25 percent expansion on the earlier year. By 2020, we expect the number will ascend to around 95 of the main 100

Essay grading is extremely cumbersome, due to which specialists and organizations have had to fabricate exposition evaluating AIs. While their selection fluctuates among classes and instructive establishments, all things considered, one can have interface with these “robo-perusers”. The Graduate Record Exam (GRE), grades papers by employing one human peruser and one robo-peruser called e-Rater. In the event that the scores vary significantly, a second human peruser is acquired to settle the error.

Examples of man-made reasoning (AI) in popular culture generally engage a pack of wise robots never going to budge on toppling humankind, or if nothing else an envision amusement park. Conscious machines with general man-made reasoning don’t yet subsist, and they likely won’t exist at any point in the near future, so we’re protected... for these days.

Google Assistant is a man-made consciousness fueled remote helper created by Google that is most importantly offered on portable and savvy home gadgets. ... Clients essentially interrelate with Google Assistant through regular voice, however console information is additionally upheld.



Google maps has an overall extension, which makes it open to anyone who has it, given that they have web association and GPS. Another factor that makes this AI application so valuable is it gives visuals on your precise area, just as your goal. With the assistance of Google maps, you have an exceptionally low likelihood of getting lost.

- Google's "G Suite" and Microsoft Office 365 are genuine instances of profitability applications which are utilizing AI to streamline and make efficiencies.

Instagram, which Facebook gained in 2012, utilizes AI to recognize the logical significance of emoticon, which have been consistently supplanting slang (for example, a chuckling emoticon could supplant "lol"). By algorithmically distinguishing the estimations behind emoticons, Instagram can make and auto-recommend emoticons and emoticon hashtags.



The idea behind Instagram's new AI detection is to thwart the comment entirely by hitting the source with the chance to recant. If that doesn't help, users can also now restrict the offending person's comments from appearing, and/or blocking them from seeing when they are online or have read messages

- Intelligent collaborators use AI to parse basic data from huge free-content datasets to improve planning

Many secondary school and undergrads know about administrations like Turnitin, a well known apparatus utilized by educators to avoid literary theft. The algorithmic key to literary theft is the closeness of work, which provides a numeric gauge of how comparable two archives are. An ideal comparability work not exclusively is precise in deciding if two records are comparable, yet additionally effective in doing as such.

- Most huge banks offer the facility of storing checks through a cell phone application, dispensing with a need for clients to physically convey a check to the bank. As per a 2014 SEC recording, by far most of real banks depend on innovation created by Mitek, which uses AI and ML to translate and change over penmanship on looks into content by means of OCR.

Pinterest utilizes PC vision, a use of AI where PCs are instructed to "see," so as to consequently recognize questions in pictures (or "sticks") and afterward prescribe outwardly comparable pins. Different utilizations of AI at Pinterest incorporate spam counteractive action, search and disclosure, promotion execution and adaptation, and email showcasing.

Recommendation motors can give mechanized proposals to TV shows dependent on clients' survey propensities

Sensory Inc.'s inward center organization, which gives firms, for example, banks, money related establishments and different ventures with improved information security. They give face and voice biometric acknowledgment, fundamental for applications with delicate security prerequisites.

Siri is a side project from an endeavor first created by the SRI International Artificial Intelligence Center. Its discourse recognizing algorithm was given by Nuance Communications.

When you transfer photographs to Facebook, the administration naturally features faces and recommends companions to tag. By what method can it in a flash distinguish which of your companions is in the photograph? Facebook utilizes AI to perceive faces.

Your Amazon look ("pressing board", "pizza stone", "Android charger", and so forth.) rapidly return a rundown of the most significant items identified with your inquiry. Amazon doesn't uncover precisely how its doing this, yet in a portrayal of its item search innovation, Amazon noticed that its calculations "naturally figure out how to consolidate different pertinence highlights.

The email inbox can possibly be an improbable spot for AI, yet the innovation is generally handling one of its most significant components: the spam channel. Basic directive channels (for example "channel out messages with the words 'online drug store' and 'Nigerian sovereign' that originate from obscure locations") aren't compelling against spam, since spammers can quickly refresh their messages to work around them. Rather, spam channels must constantly gain from an assortment of sign, for example, the words in the message, message metadata (where it's sent from, who sent it, and so on).

Watson is a question-answering computer system capable of answering questions posed in natural language, developed in IBM's DeepQA project by a research team led by principal investigator David Ferrucci. Watson was named after IBM's founder and first CEO, industrialist Thomas J. Watson. IBM built Watson to apply advanced natural language processing, information retrieval, knowledge representation, automated reasoning, and machine learning technologies to the field of open domain question answering. IBM supercomputer that combines artificial intelligence (AI) and sophisticated analytical software for optimal performance as a "question answering" machine.

The decision by Microsoft to invest \$1 billion in OpenAI, a company jointly founded by Elon Musk, brings closer the time when machines threaten to replace humans in any tasks that humans do today.

OpenAI, which was founded just four years ago, has pioneered a range of technologies which have pushed the frontiers of massive data processing in defiance of the physical and computer capabilities that governed such developments for generations.



A few people also consider AI to be a hazard to mankind in case it propels unabated. Others acknowledge that AI, rather than past mechanical unrests, will make a peril of mass unemployment. Also, the organization's scientists are thought pioneers on the morals and cultural effects of astute advancements. The exploration, apparatuses and administrations that result from this investment funds are woven into existing and fresh items and, at the same time, made open and available to the more extensive network in the hope to quicken advancement, to democratize AI and tackle the world's most squeezing difficulties. In this century, AI systems have polished a renaissance following simultaneous advances in technology control, huge information, and hypothetical comprehension; and AI methods have transformed into an essential part of the innovation business, disentangling many testing issues in software engineering, programming building and activities research. Nonetheless the global race for all things that engross artificial intelligence (AI) is at an agitation arena, and the business stakes are far above the ground. In the near future, AI technology will probable become a technique of life for numerous inhabitants, with day after day interactions with a smart storyteller or a personalized AI that provides solutions derived from a user's illustration, tangible, and heartbreaking cues. AI will also become the most effective enabler of competitive advantage all the way through most areas of society and economy. Innovation is even now in its earliest stages. What numerous organizations refer to as A.I. today, aren't completely correct in assuming so because of the software that reacts based on pre-characterized multi-faceted info or client conduct. That isn't definitely A.I.

While organizations like Apple, Facebook and Tesla rollout notable updates and progressive changes to how we associate with AI innovation, a large number of us are as yet confused on exactly how A.I. is being utilized today by organizations of all shapes and sizes. What amount of an impact will this innovation have on our future lives and what different ways will it saturate everyday life? Whenever A.I. truly blooms, what amount of an upgrade will it have on the present emphases of this purported innovation? Finally Convenience, correctness, and effectiveness are some of the main reasons why businesses opt to amalgamate AI into their business processes. As the technology continues to grow, more and more processes can be handled by AI, allowing its user to assistance from the augment in productivity, revenue, and in the way they activate their business as a whole.

11 Year Plus Journey about GJEIS: From 2009-2019

GJEIS which was originated in the year 2009 is one of the peer review referred journal which has been persistent in serving the researchers. We want to launch an out of the ordinary festivity: the first 11 years of GJEIS with your support and that of many other colleagues from different areas of expertise, without whom this sparkle would not have ignited. This volume is a signpost in overflowing ways. First, it scripts the establishment of our 10th year of publication, in which we have put forth how GJEIS has emerged. Second, we are about to embark on a new decade, under the banner of our new publisher, Scholastic Seed Inc. (www.scholasticseed.in). Scholastic Seed Inc. originated as a think-tank and an Out-of-Box service contributor of periodicals online platform apparatus and had urbanized digital state-of-art periodicals software exclusively for the magazines, scholarly journals, newspapers, annual reports and newsletters. In the present state of affairs these publications are available at regular intervals and require lots of digitization and contemporary thought to burgeon online.



I would like to thank KARAM Society in particular for having the vision to back our young periodical and see it through to teenage years. I've been fortunate to work alongside some splendid people, who helped an inexperienced editor, as we urbanized a bulletin with a very divergent point of view. As we go into the next segment of our escalation, I'm looking forward to working with Scholastic Seed Inc. that originated as E-publishing Aggregator & Periodical Mentor, a pioneer in library management and innovative corporation, which is rapidly expanding in the area of periodicals. The vertebral column of any journal is its editorial board as it not only sanctions the journal but reinforces it. Perhaps the most extensive and important task of the board is to bequeath with high-quality reviews for articles where you may find tangential reviewers. Board members can also carry out as a third, or trusted "tie- breaker" reviewer on articles where there are split opinions. We have fashioned a new pedagogy from 2019 to reinforce and bring lucidity. The below box provides the understanding of the review process the journal follows across all the article published in particular issue volume after volume, the take out of the reviewer's and editorial comments are enclosed just for the information of the reader. From forthcoming issue we have made our mind to add a blind reviewer's comment at the end of an article without disclosing the identity, so that more curious debate in academia would reach to unreached which by and large facilitates a grass root researcher about the reviewer process.

The editorial board (also known as an advisory board) ordinarily comprises of a gathering of noticeable individuals in the journal's field. Having an article board is exceptionally critical as they go about as diplomats for journals. More often, the quality of a journal is measured by the individual and academic accreditations of its editorial board. Besides giving recognition, the job of the editorial board is to prompt and bolster the proofreader. Capacities may include:

- Identifying new themes for commissions, special issues and prompting on course for the journal—giving input on past issues and making recommendations for both topics and potential creators
- Provide content by composing periodic publications and other short articles
- Approaching potential patrons
- Peer audit; additionally help to distinguish peer analysts and give second conclusions on papers (for example where there is a contention between commentators)
- Identify fitting meetings for editors to visit
- Endorse the journal to writers, peruses and supporters and urge partners to present their best work.

In review of the exactitude it has begun its production by mulling over on issues concerning science, management, engineering and innovation in different areas of research, improvement and its meaning. Since GJEIS is an academic journal, it is economically sustained by KARAM Society, a Research and Academic Management conglomerate. GJEIS with a scholastic authorization is run by business distributors who don't make a benefit by charging memberships to individuals and libraries and tender free articles from their portal www.gjeis.com.

The GJEIS as an educational journal encourages dignity with its examination activities and fastidious blind and peer review process. The journal is as of now at present recorded in very nearly fifty registries throughout the globe, outfitted with Digital Object Identifier (DOI) from Cross-ref USA <http://www.crossref.org> . It also has an average impact factor of 2.31 from the different impact factor rating organizations. As of late according to the Google scholar, h-index is 94 and i-10 list is 921 from 2009-2019. From 2019 onwards as per the instruction given by the international listing agencies which provide ratings to the journal, we have started putting a similarity index at the end of an article to give more transparency and credibility to journals. Hope that these kinds of initiatives can definitely give journal an edge and create a niche. The journal with its present Volume- 11 Issue-II April-June 2019 had a mandate to advance the idea of Enterprise, Information and System in business. It is intended to create a network of harmonization between these three words. It is essential to know what the scholars and the academics are going to contribute about scientific showground in making a break. We have created an across-the-board cluster to make GJEIS genuine.

We had also at the present made the Open access Journal with the goal that colossal number of individuals gets to use and appreciate perusing content. Furthermore, the committed page on Facebook has also been made to create a network of scholars and academics alike <https://www.Facebook.com/GJEiS>. The GJEIS site has been moving to another contemporary Google-facilitated JavaScript administration which marks the length of populace and curates online catalog thereby helping in ordered and smooth access to peer-reviewed articles. It is additionally outfitted with site design improvement and web investigation for measurable examination and reference. GJEIS has also been put forth for UGC Approved List of Journals at S. No. 27981 till June 2019 <https://www.ugc.ac.in/journallist> and is also going to get a space in a care list designed for journals due to its rigorous review process



To commemorate this we want to publish a Issue that collects your impressions in the form of review, original article, letter to the editor, opinion or perspective article, etc., which includes a paragraph of congratulation to GJEiS on its 11th anniversary. It may also take account of a personal reflection on how has GJEiS influenced your work as a researcher, why do you like to publish in GJEiS or what do you think GJEiS has contributed to the field?

I, on behalf of GJEiS want to express thanks and appreciation to the whole workforce of KARAM Society and group of people from Scholastic Seed Inc. for their enthusiasm and relish in bringing out this current volume/issue. To make the journal a benchmark from 2019 we are creating a new squad with more modern thought and strengthening the peer review process. I would in compute be appreciative of your dependable assenting feedback to our society and staff at the review office.

A handwritten signature in blue ink that reads 'Subodh'.

Dr. Subodh Kesharwani
Editor-in-Chief, GJEiS
Three Year Notified Tenure (2018-2020)
Email: skesharwani@ignou.ac.in
Orcid Id: <https://orcid.org/0000-0001-8565-1571>

Subodh Kesharwani is an academician with a bronze medal in his Post graduate and Doctorate in ERP System in 2002 from Allahabad Central University. He is one of the researchers who had concentrated his research on Total Cost of Ownership [TCO] & critically evaluate ERP vendors including SAP. Dr. Kesharwani is presently an Associate Professor, School of Management Studies with a total 20 years of hardcore teaching and research in Information System and its linkages with various domains of management at Indira Gandhi National Open University, New Delhi. He is presently an expert in various burgeoning areas and had delivered a talk as a trainer on MOOCs, Team Building, E-commerce, Technology Enabled Learning, E-resource, Technology Uses in research, Block chain, Internet of Thing, Enterprise Information System, Free & Open Source Software, etc. Dr. Subodh had developed and coordinated a program in Entrepreneurship & Business Skills in collaboration with Rajiv Gandhi Foundation (RGF), India and Commonwealth of Learning, Vancouver, Canada which provides training to the trainers at IGNOU. He is presently a program coordinator of IGNOU-ICWAI alliance. He is also a founder Editor-in-chief of a peer reviewed refereed journal entitled “Global Journal of Enterprise Information System [GJEiS] from 2009 onwards, www.gjeis.com which has completed its 11 years term and published 40 issues till date both in printable and virtual format. The Journal GJEiS is equipped with DOI from Crossref USA and listed in almost 50 directories in the world with an impact factor of 2.68 of 2017-18. Dr. Kesharwani had participated as a debater in diverse TV show and participates in Interactive Radio Counseling including Gyanvani and Gyandarsshan. He had written a Book entitled “ENTERPRISE INFORMATION SYSTEMS-Contemporary Trends and Issues” in a co-authorship with Professor David L Olson (University of Nebraska, USA. which was published by WORLD SCIENTIFIC, USA. <http://www.worldscibooks.com/business/7287.html> He had another text book on ERP system which caters a B.Tech VI Semester CS and IT Students. He had developed educational contents for various academic Institutions such as ICAI, IGNOU and contributed articles for various journals/ Magazines, etc. He had chaired a good number of technical sessions at various conferences & seminars nationally and globally. He is presently running a “Blockchain Federation for Indian Researcher” which he thinks can bring paradigm shift holistically. Dr. Kesharwani had been awarded “IT Innovation & Excellence Award 2012” in the field of ERP solutions, by KRDWG’s Selection Committee at IIT Delhi. He is in the panel of the Steering Committee of the International Journal of Computing and e-Systems, TIGERA-USA. He was in the key panel of round-table workshop conducted by Ministry of Corporate Affairs in Association with Indian Institute of Corporate Affairs to streamline “Corporate Data Management and Governance”. He was one of the resource person who shared the experience with the 12 different ITEC countries participants who had attended International MDP.
